

31 October 2025

Principal's Message

Kia Ora Everyone!

It's been a great start to Term 4, even if a little disjointed with the teacher strike, Teacher Only Day, and Labour Day long weekend! We hope you managed to get away for a few days or simply make the most of the extra family time.

Our Teacher Only Day had teachers taking part in professional development focused on the new government-funded 'Pr1me Maths' resource. This programme will help support consistent, high-quality maths teaching across the school in 2026 and beyond. A huge congratulations to our Year 5 Mathex team, who took out first place in the Eastern Zone Mathex Tournament last week. What an incredible achievement! Our thanks go to Ms Tabaco and Ms Churches for preparing the team so well and for giving up their evening to support the students and help at the event.

This week also saw another highlight on our calendar, the annual ESOL Market Day, which was, once again, a fantastic success. Thank you to Judy Clark and our ESOL team for the enormous effort that went into the organisation of this wonderful event for our ESOL students.

Looking ahead, we are thrilled to introduce a brand-new celebration of creativity, our **St Thomas's School Art Fair and Exhibition on 12 – 13 November**. Every student (except those who have been away) has at least one artwork in the exhibition, and these pieces are available for purchase now via our [Online Shop](#). Don't miss the chance to secure your child's original masterpiece before the general public has the opportunity to buy during the Evening Awards Event on Thursday 13 November. We can't wait to open the hall doors and showcase the incredible talent of our students who have worked really hard with our specialist art teachers Mrs Sara Haddon (Y4-8) and Mrs Sarah Allen (Y1-3). We encourage you to support this exciting new event by visiting the exhibition, coming along to the Awards Evening, and purchasing your child's artwork to treasure at home. More information about the Art Fair and Exhibition follows in this newsletter.

Happy Halloween, and have a lovely weekend!

Claire Fromow
Acting Principal



Congratulations to our Yr 5 Mathex team, who took out first place in the Eastern Zone Mathex Competition.

Upcoming Dates

November

- 03 Junior Formal Assembly
9.15am – 9.45am (school hall)
Senior Formal Assembly
10.00am – 10.30pm (school hall)
- 04 Bay Suburbs Touch Rugby
- 05 Y5 & Y6 Athletics Day
- 06 Y7 & Y8 Athletics Day
- 12&13 St Thomas's School Art Fair
- 13 Y3 Trip to Corban Estate Arts
(M2 and half of M1)
- 17 Junior Assembly (M1 Hosting)
10am (school hall)
Senior Assembly (House Captains
Hosting) 11.45am (school hall)
- 18 Bay Suburbs Athletics
- 19 Y6 Science Fair
- 20 Eastern Zone Athletics
- 20 Y3 Trip to Corban Estate Arts
(M3 and half of M1)
- 25 Y8 Rainbow's End Trip
- 25 Board of Trustees Meeting
(6.30pm staffroom)
- 26 Y0 Photos
- 26 Y5 Maritime Museum Trip (S7 & S8)

Save the Dates

Prizegiving: Friday 12 December 2025

Colour Run: Monday 15 December 2025

Increased National Risk of Measles

Health New Zealand has alerted schools to an escalating risk of measles as it responds to a measles outbreak following confirmation of 13 new cases of measles since 20 October. This escalating risk is a concern, especially for education settings where measles can spread rapidly.

Measles is highly contagious and serious – about one in three people may need hospital care. It spreads when an infected person breathes, coughs or sneezes.

Information for Parents

- Measles is circulating and is very contagious. There is now measles in Northland, Auckland, Manawatu, Nelson and Wellington, and further cases are expected across New Zealand.
- Watch out for symptoms – fever, cough, runny nose, sore eyes, and a blotchy rash.
- Anyone with measles symptoms must stay at home and should seek urgent advice by ringing their doctor or Healthline on 0800 611 116.
- Anyone who is closely exposed to a measles case must stay at home. Health New Zealand will provide individuals with advice on a case-by-case basis (including when they can leave quarantine at home).
- Health New Zealand is actively working with the schools that currently have measles cases.
- People are considered immune to measles after having two doses of a measles vaccine from 12 months or older, or if you have had measles before. For more information on measles immunity visit: [Measles immunity – Health New Zealand](#)
- You are encouraged to check your own and your child/childrens' immunisation status through My Health Record: [My Health Record – Health New Zealand](#)

Anyone born between 1969 and 2004 may have only received one vaccine dose and might not be fully protected. It's safe to get extra doses. A free vaccine can be booked online or via the Vaccination Helpline on 0800 28 29 26: [Book my vaccine – Health New Zealand](#)

Planning for Classes for 2026

We are currently planning for our classes for 2026. If your child is not returning to St Thomas's School next year, can you please let the office know.

Important Dates - 2026

Friday 30 January: Meet the teacher appointments

Monday 2 February: First day of Term 1

Beehive

Our school beehive is back into full honey making mode with the arrival of spring and our beekeepers are enjoying keeping an eye on the hive, not to mention tasting the freshest honey straight out of the hive. The queen is also as 'busy as a bee', laying up to 2,000 eggs every week. Each week over the summer terms our senior students have the opportunity to put on bee suits and open the hive to see the inner workings of these amazing creatures. Did you know that 1 in every 3 mouthfuls you eat is attributable to bee pollination? Sadly though, approximately half of all beehives fail over winter and there is a shortage of bees. At St Thomas's we are committed to doing our best to help the bees by caring for our hive and planting bee friendly plants.



Mathex Competition



Excitement filled the air as our talented Year 5 and 6 teams faced off against strong competition from Diocesan, St Cuthbert's, King's School, St Kentigern's and more, in this year's annual Year 5/6 Mathex Competition. With just 30 minutes to tackle 20 challenging questions, our students showed incredible teamwork, speed, and mathematical problem-solving skills.

We're thrilled to share that our Year 5 Team A won their round, finishing with over 7 minutes to spare!

Congratulations to all our students who participated for their hard work and outstanding performance. The winning trophy will be proudly on display soon!

Teams:

Year 5 Team A: Reddington, Oliver, Katie, and Louis

Year 5 Team B: Noelle, Darian, Adam, Harry

Year 6 Team A: Lucas, Tongji, Rowan, Auren



Eastern Zone Touch Rugby Tournament 2025

On Monday, 28 October, we took three teams to Madills Farm for the Eastern Zone Touch Rugby Tournament. Despite a very rainy and windy day, our students showed incredible determination, resilience, and school spirit throughout every game. The weather made the day challenging, but it didn't stop our players from giving 100% and supporting each other on the field.

All three teams represented St Thomas's with pride, showing great skill, teamwork, and sportsmanship. We had some fantastic wins and a few close losses, however, every player contributed to the effort and made the day a huge success. It was inspiring to see the students persevere, keep positive, and maintain their energy in tough conditions.

A massive thank you to all the parents, whānau, and staff who braved the rain and wind to cheer on our teams. Your support made a big difference and helped create a fun and encouraging environment for all our players.

Ka mau te wehi, St Thomas's - what a memorable day of sport!



Staff Profile – Sylvia de Clercq



I am originally from South Africa. My husband and I made the exciting move to Auckland in 2022, and we are truly enjoying our new home. We have a delightful toddler who keeps our lives filled with joy and adventure. As an educator, I am passionate about creating a positive and engaging learning environment. My goal is to inspire each child to embrace challenges, think critically, and approach their education with enthusiasm. I want them to feel supported and encouraged to explore their interests and develop their unique talents. By instilling these values, I hope to contribute to their growth both academically and personally.

Staff Profile – Connie McAdam

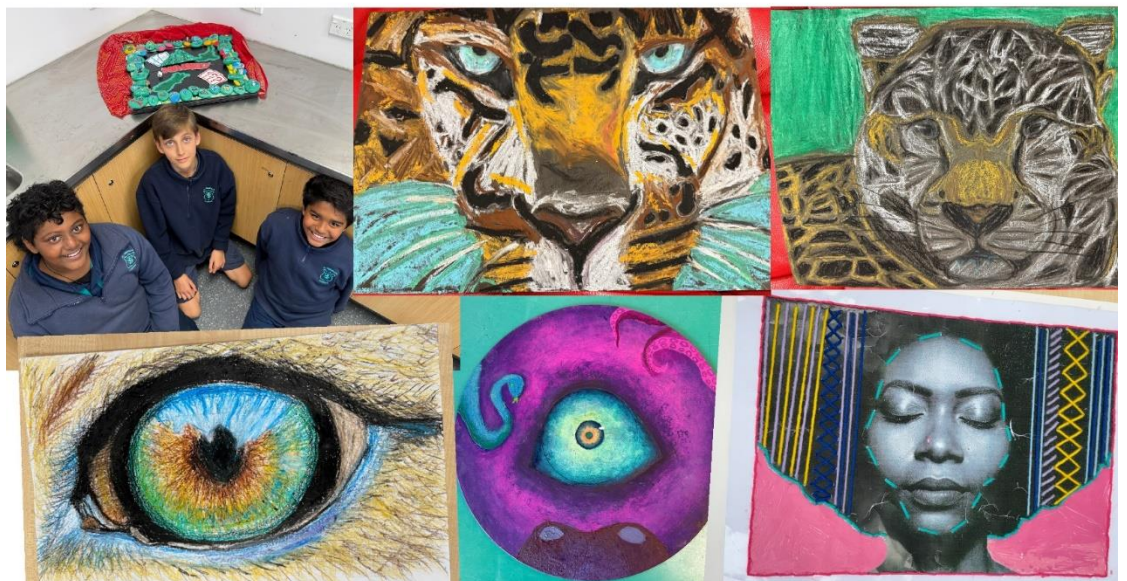


My teaching career began in Cape Town, where I spent many years working in special education before moving to New Zealand. After settling here, I worked at Kelly Tarlton's and when my children went to college, I returned to the classroom. Helping children build confidence and independence is at the heart of why I teach, and seeing their progress and development over the year is truly fulfilling. In my classroom, I aim to create a warm, caring environment where students feel supported and encouraged to do their best. Outside of school, I enjoy cycling to work when the weather allows, as well as sewing, painting, reading and spending time with family and friends. I also appreciate the rich cultural diversity of our school and the sense of community that makes it such a special place to be part of.

Auckland Intermediate Art Exhibition

Congratulations to our Year 7 & 8 students: Selma Bajraktari, Maggie Mayer, Lachlan Saena McFarland, Jayden Zhou, Tommey Tran, Ave Shen, Emily Scott, Mikaela Lowe, Max Fukushima, Nathan Vallaidam, Willem Wind, Rudra Joshi, Anise Li, Adrian Ferizadeh, Alisa You, Blake Mountford, Richard Zhang, Helaman Tapa and Clementine Greyan whose art was selected from an amazing pool of art to be professionally exhibited and framed alongside other Auckland Intermediate Art works. Each school was able to exhibit approximately 20 artworks only, and it is an honour to have been selected.

Here are a few of the artworks:



The exhibition runs, daily, from Sunday 2 November - Sunday 9 November at Silo 6, Wynyard Quarter. (Sunday 2 November opening ceremony 2 pm, Monday to Saturday 10 am - 5 pm, Sunday 9 November 9 - 12 pm).

St Thomas's School Art Fair & Exhibition (Y1-8)

Later this term, we will be celebrating all of our students' amazing 2025 art experience with our very own Art Fair and Exhibition.

The Art Fair will be held in our school hall and will begin with a 2-day exhibition available to everyone in the community with a gold coin donation entry. There will then be a separate evening event where we celebrate the winners of our art awards:

- Class Silver Award
- Class Gold Award
- Supreme Winner/s
- People's Choice Award (one per year group)

Each student (excluding those who have been absent) will have at least one piece of art on display. Some students may have up to three artworks on display. Art may include pencil work, painting, textiles, construction, clay, and murals to name a few.

Student artwork is able to be purchased by families from now onwards via our [Online Shop](#) and any unsold artwork will be available for general sale at the evening event.

Details of the event including dates, times and artwork prices are below.

Art Exhibition General Viewing (gold coin donation entry, payable via online shop or at the door)

Wednesday 12 November

- Morning Session: 8.30am - 9.30am
- Afternoon Session: 2.00pm - 4.00pm

Thursday 13 November

- Morning Session: 8.30am - 9.30am
- Afternoon Session: 2.00pm - 4.00pm

Art Fair Evening Event and Awards Night

(\$5 ticket per family payable via online shop)

Thursday 13 November

- 6.00pm – 8.00pm

Purchasing Artwork

All original artwork pieces can be purchased from now and up until the Evening Event for \$10 via our [Online Shop](#).



For students with more than one artwork, a bundle of all original artwork pieces can be purchased for \$15 via our [Online Shop](#). *If your child has more than one piece of art, you will be notified in a separate HERO post closer to the event. We have included a handy 'upgrade' option within the Online Shop for this purpose if you want to purchase artwork early.*

For families where there is more than 1 purchaser, the first to purchase will receive the original art, and the second purchaser will receive an artwork print.

All purchased art will be available for collection from school from Monday 24 November onwards.

We can't wait to share our students' amazing artwork with our community and we appreciate your support in coming along to the exhibition and fair and for purchasing your child/children's art.



Public transport services for 2026

Kia ora,

With the end of the school year approaching, we want to reach out to schools and parents with information about public transport in readiness for 2026.

The beginning of the school year, from the second week of February through until Easter, see a sharp increase in demand on Auckland's roads and public transport as schools and universities commence and people return to work from summer holidays. There will be more people than usual on the roads and using public transport services, especially during peak hours.

Each year, Auckland Transport reviews the performance of the network from February to April of the previous year, including school bus services and other popular services. We have already reached out to schools across Auckland asking for roll changes to plan ahead.

Here are three things parents and students can do to help ease the impact on school journeys during this busy time:

- **Ensure student's HOP cards are topped up.** Children ages 5 to 15 are eligible for a child concession giving them 40% off travel by bus, train or ferry when using their registered AT HOP card. For information on how to set up concessions search 'AT HOP card' online.
- **Encourage students to tag on and off each school bus trip.** It is important that everyone tags onboard so we can get accurate information about how many students are onboard each bus. This information is used to make informed adjustments to school bus timetables and bus sizes.
- **Plan ahead for the busy season.** If school buses are not an option for students, they can use urban bus services. You can use AT Journey Planner to find the service that will work best for them. Please know that public transport services will be busier than usual, so it's important to allow enough time for them to arrive early to get their bus, train or ferry in case there are queues.

If you have any questions about public transport services, you can call **09 366 6400** or email **info@at.govt.nz**.

Have a great end of the year and summer break,

Auckland Transport



STS News

To watch the 27th episode of the series, click [HERE](#).

To watch the 28th episode of the series, click [HERE](#).

To view previous STS news episodes, click [HERE](#).

Notices

Please see our website for details about:

Clubs and activities:

<https://www.stthomas.school.nz/clubs-and-activities/>

Community notices:

<https://www.stthomas.school.nz/community-notices/>

School holiday programme:

<https://www.stthomas.school.nz/school-holiday-programmes/>

PTA NEWS

The PTA is on
Facebook & Instagram
Follow us for the quickest way to see what's going on!
Search for: StThomasSchoolPTA

stthomasschoolpta@gmail.com



Instagram



Facebook

UPCOMING EVENTS

EVERY
FRIDAY

ICE BLOCKS
NOTE: NO Ice Blocks on 31 October

NOV
19

PTA MEETING
7pm in the school staff room

DEC
5

PARENT'S AFTERNOON TEA
2:00 - 2:50pm in the school staff room

DEC
15

COLOUR FUN RUN
On the school field



ST THOMAS'S PTA PRESENTS...

COLOUR RUN

2025

SAVE THE DATE!
MONDAY, 15 DECEMBER

MORE DETAILS TO COME

PTA UNIFORM DRIVE SECOND-HAND UNIFORMS NEEDED

Have school uniforms that no longer fit?
Donate them to the PTA and help us turn
outgrown clothes into funds for our school
via our uniform sales!
Drop them off any time inside the school office

Next uniform sale:
Friday, 30 January 2026 @ Meet the Teacher day

**HAPPY HALLOWEEN
FROM THE PTA!**

**DO SUPER! THINGS
WITH THE PTA!**

VOLUNTEER
CALLING ALL MUMS, DADS, AUNTIES,
UNCLES, NANAS & GRANDADS, BE A
POSITIVE ROLE MODEL...
JOIN OUR PTA WHĀNAU!

**SHARE YOUR
TALENT**
YOU HAVE SUPER SKILLS
AND KNOWLEDGE
TO SHARE

SUPPORT US
HELP AT OUR EVENTS
BUT SKIP THE MEETINGS.
JOIN "FRIENDS OF THE PTA"

EMAIL US @ STTHOMASSCHOOLPTA@GMAIL.COM

FUNDRAISING GOALS

Our fundraising efforts for 2025 will go towards enhancing the STEAM programme with new equipment & resources.





Contact: Ian Palmquist
Phone: 021 0803 3666
Email: stthomas@kellyclub.co.nz
Website: kellyclub.co.nz/st-thomas



KELLY CLUB ST THOMAS'S UPDATE

What's been happening...

During "Bee Kind" week, we made Bee Kind flowers, played steal the flower and baked Bumble Bee balls. Thanks for another epic week!



What's happening next week!

		THEME: Ka-Boom! Term 4 Week 5, 3rd November 2025				Weekly Activities Plan Kelly Club St Thomas's
	Monday	Tuesday	Wednesday	Thursday	Friday	
7:00 - 8:15 am	Flag Making & Structured Free Time	Target Practice & Structured Free Time	Finger Painting & Structured Free Time	Sizzling Indoor Fireworks & Structured Free Time	Homemade Pikelets & Structured Free Time	
8:15 - 8:30 am	Game: Kids Yoga	Game: The Listener	Game: Balloon Tag	Game: Staff Choice	Game: Angry Birds	
3:00 - 3:10 pm	Sign In & Free Time	Sign In & Free Time	Sign In & Free Time	Sign In & Free Time	Sign In & Free Time	
3:10 - 3:30 pm	Intro & Afternoon Tea Rice Bubble Cakes & Fruit	Intro & Afternoon Tea Sammies & Fruit	Intro & Afternoon Tea Tomato Pasta & Fruit	Intro & Afternoon Tea Sammies & Fruit	Intro & Afternoon Tea Pikelets & Fruit	
3:30 - 3:45 pm	Game: Human Paper, Scissors, Rock	Game: Duck, Duck, Goose	Game: Toilet Tag	Game: Follow the Sergeant	Game: Cat and Mouse Tag	
SENIORS 3:45 - 4:30 pm	DISCOVERY Spinning Top Fireworks 	SPORT Defuse the Bomb 	COOKING Firework Pops 	CRAFT Splatter Painting 	GAME Bang! 	
JUNIORS 3:45 - 4:30 pm	GAME Pass the Bomb 	DISCOVERY Playdough Volcano 	COOKING Firework Pops 	SPORT Defuse the Bomb 	CRAFT Firework Blower Tube 	
4:30 - 4:40 pm	Tidy Up	Tidy Up	Tidy Up	Tidy Up	Tidy Up	
4:40 - 5:20 pm	Playground	Playground	Playground	Playground	Playground	
5:20 - 5:30 pm	Homework & Quiet Time	Homework & Quiet Time	Homework & Quiet Time	Homework & Quiet Time	Homework & Quiet Time	
5:30 - 6:00 pm	Snack Time Potato Sticks	Snack Time Corn Thins	Snack Time Baking	Snack Time Raisins	Snack Time Muesli Bars	

E: stthomas@kellyclub.co.nz

kellyclub.co.nz/stthomas

P: 021 080 33666



BOOK ONLINE NOW AT www.kellyclub.co.nz